

BriteMED® Wireless 12-Lead Portable ECG

True Portability & Universal for Mobile Devices

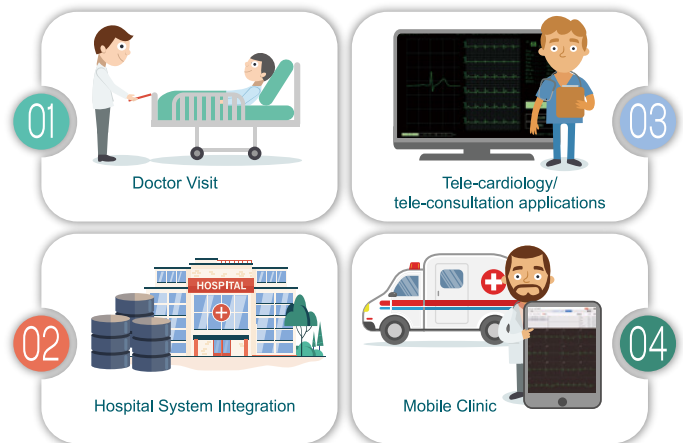


Cross-Platform Flexibility

The cross-platform operation interfaces, iOS/Android/Windows, maximize installation convenience without extra costs. The APIs are also ready, facilitating quick ECG integration to various scenarios.



The BriteMED® Wireless 12-Lead Portable ECG is designed with wireless data transmission technology and operation on current mobile devices, creating true portability and easy installation for doctor visit and cost-effective tele-consultation solution. Real-time waveforms displayed on mobile devices with clinically verified interpretation algorithm, the precise health pre-screening is realized efficiently. The ECG report can be seamlessly integrated to hospital system to synchronize patient records that shortens doctor's decision process to make quick follow-up treatment plan.



Benefits



True Portability

The palm-sized light weight is convenient for doctors to carry out for visiting bedridden and elderly home patients. The short SNAP cable are easy for integration in telemedicine kit and tele-cardiology solution.



High Usability

The user interface is designed for intuitive operation. The multi-language customization option allows quick localization. Waveform layout and report format are also adjustable by preferences.



Effortless Adoption

The cross-platform application program allows quick installation to current devices without extra efforts. The APIs facilitate ECG integration to various application scenarios.



Intelligent Report System

Patient database can be exported to and imported from external system for integration. The report (PNG/PDF files) with assistive interpretation can be printed and saved, also shareable for quick consultation.

Intuitive User Interface

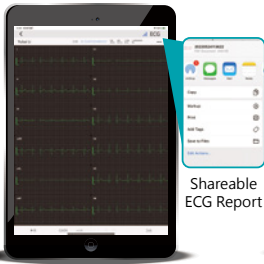
The cross-platform communication interfaces are designed with intuitive operation flow, including patient management, report sharing, and preference settings, to satisfy user requirements from diverse scenarios. Multiple user accounts can be created for data security of individual patient database. Quick access function simplifies operation flow for emergency situation.



Account Login / Quick Access



Patient Management



Real-time ECG Waveforms

Shareable ECG Report



Preference Settings

Specifications

Mode No.	ECG-D12-B/ECG-D12-BA
Patient Leads	12-lead electrocardiogram
Gain/Sensitivity	5, 10, 20, 40mm/mV, Deviation<5%
Sampling Rate	500 samples/second/channel
Low Pass Filter	40 Hz, 150 Hz, 200 Hz, off
High Pass Filter	0.05 Hz, 0.15 Hz
AC Filter	50 Hz, 60 Hz, off
Common Mode Rejection (CMRR)	> 90dB
Sweep Speed	25mm/s
Impedance	>2.5MΩ
Noise Level	<30uV
Channel Crosstalk	< 0.5mm
Frequency Response	0.05Hz~ 150Hz
Linear & Dynamic range	±5mV
Printing Paper Size	A4
HR Measurement Range	30BPM~250BPM, Deviation± 1BPM or ± 1% whichever is larger
Defibrillator Protection	Yes
Pacemaker Detection	Yes
Power	2 x AA batteries (suggested using Alkaline battery)
Dimensions (L x W x H)	110 x 70 x 25 mm
Weight	103g (w/o battery)
Operation Temperature	5°C ~ 40°C
Storage/ Transportation Temperature	-20°C ~ 55°C
Data Transmission	BLE 5.0
Compliance Standards	IEC/EN 60601-2-25, IEC/EN 60601-1, IEC/EN 60601-1-2
Package Contents	<ul style="list-style-type: none"> • ECG x 1 • 10-electrode patient cable (banana or snap connectors, varied by models) x 1 • USB flash drive (user manual) x 1 • Quick guide x 1 • Carry bag x 1

Ordering Information

Part No.	Description
ECG-D12-B-10BA-U-R10	A ECG device with 12 lead cables (AHA_Banana Type) by Bluetooth,US
ECG-D12-B-10SA-U-R10	A ECG device with 12 lead cables (AHA_Snap Type) by Bluetooth,US
ECG-D12-B-10SI-E-R10	A ECG device with 12 lead cables (IEC_Snap Type) by Bluetooth,EU
ECG-D12-B-10BI-E-R10	A ECG device with 12 lead cables (IEC_Banana Type) by Bluetooth,EU
ECG-D12-BA-10BA-U-R10	An Analyzing ECG device with 12 lead cables (AHA_Banana Type) by Bluetooth,US
ECG-D12-BA-10SA-U-R10	An Analyzing ECG device with 12 lead cables (AHA_Snap Type) by Bluetooth,US
ECG-D12-BA-10SI-E-R10	An Analyzing ECG device with 12 lead cables (IEC_Snap Type) by Bluetooth,EU
ECG-D12-BA-10BI-E-R10	An Analyzing ECG device with 12 lead cables (IEC_Banana Type) by Bluetooth,EU

Options

Part No.	Description
ECGA-C10SI-E-R20	10 patient leads one-piece snap type IEC ECG cable, EU
ECGA-C10SA-U-R20	10 patient leads one-piece snap type AHA ECG cable, US

Part No.	Description
ECGA-C10BI-E-R20	10 patient leads one-piece banana type IEC ECG cable, EU
ECGA-C10BA-U-R20	10 patient leads one-piece banana type AHA ECG cable, US



ECG-D12-R20_datasheet_V1_20230725

Britemed Technology Inc.

3F., No.306/306-3, Sec. 1, Datong Rd., Xizhi Dist., New Taipei City 22146, Taiwan

TEL: +886-2-86919498

FAX: +886-2-86919468

www.britemed.com.tw

Specifications may change without further notice.
© 2023 BriteMED Technology Inc. All rights reserved.

Celebrate Humanity With Technology