

Celebrate Humanity with Technology

## BriteMED® POCm-W22C/W24C-RPL

22"/24" Medical Panel PC with 13th Gen Intel® Core™

i5 / i7 Processor for Mobile EHR Workstation



### Features

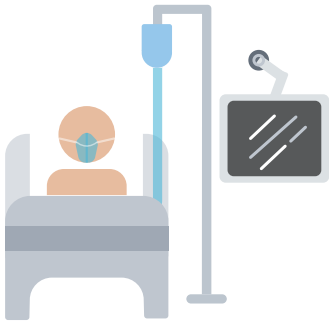
- 13th Gen Intel® Core™ i5/ i7 Raptor Lake-P elevate great performance
- 3 high capacity batteries (up to 291Wh) with lighter weight for superior power supply
- Anti-bacteria housing with IP65 front bezel for sterilization and prevent liquid infiltration
- Advanced 802.11ax 2T2R module (Wi-Fi 6E) wireless enable connected devices at an optimum level
- Medical grade with IEC60601-1/60601-2 certifications

### Specifications

Model		POCm-W22C/W24C-RPL	
Description	CPU	13th Gen Intel® Core™ i5-1340PE / i7-1370PE (Raptor Lake-P)	
	Memory	2 x 262-pin 4800MT/s dual-channel DDR5 SO-DIMM slots (standard 8GB)	
	Storage	1 x 2.5" accessible SATA HDD bay 2 x M.2 2280 M key (PCIe) with RAID	
	Camera	8-megapixel CMOS front-facing camera	
	Expansion	1 x PCIe Mini (PCIe) 1 x M.2 2230 A-E key (PCIe+USB) 2 x M.2 2260/80 B-M key (PCIe)	
Display	Size	21.5" / 23.8" (16:9)	
	Max Resolution	1920 (W) x 1080 (H)	
	Luminance (cd/m <sup>2</sup> )	350	
	Contrast Ratio	1000:1	
Touch screen	Type	Projected capacitive type with 10-point multi-touch	
	Surface Hardness	6H	
Front Button	Function Keys	1 x Power on/off	
		1 x Volume up	
		1 x Volume down	
		1 x Brightness up	
		1 x Brightness down	
		1 x LCD on/off and touch lock for cleaning	
I/O Ports	USB 3.2 Gen	4	
	USB 2.0	2	
	RS-232/422/485	1	
	2.5GbE LAN	1	
	USB-C (DP + USB)	1	
I/O Ports	HDMI Output	1	
	Audio Out (line out)	1	
	DC Jack	1	
	DC Output (12V/19V/24V-20W)	1	
	Digital Mic	1	
	Mic In	1	
LED	Indicator	1 x RFID indicator 1 x Power indicator 3 x Battery indicator (color: blue/red)	
Audio	Speaker	2 x 2W speaker	
Wireless	Wi-Fi & Bluetooth	IEEE 802.11ax 2T2R module (Wi-Fi 6E) with BT v5.2 (M.2 2230 A-E key)	
Mechanical	Mounting	Wall, Stand and Arm; VESA 75/100 compliant	
Mechanical Power	Dimension (W x H x D)	22: 543 x 350 x 71 mm	
		24: 594 x 379 x 71 mm	
	Weight	22: 7.07 kg (without battery) 8.43 kg (with 3 batteries) 24: 8.18 kg (without battery) 9.53 kg (with 3 batteries)	
Power Environment	Power Input	19V DC input	
	Power Adaptor	150W medical power adapter	
	Battery	3 slots for Li-ion battery pack	
Environment Certifications	Operating Temperature	0°C~40°C	
	IP Level	Front Panel: IP65	
	EMC & Safety	CE, FCC Class B Part18 EN 60601-1: 2006/A1:2013 (Edition 3.1) EN 60601-1-2: 2015 (Edition 4.0)	

## Medical Applications

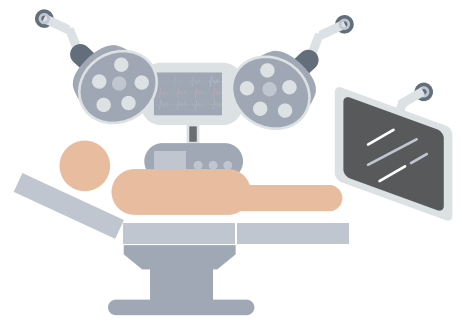
BriteMED Medical AIO delivers optimal performance in strict hospital environment and streamline clinical workflow for versatile applications.



**Intensive Care Unit**

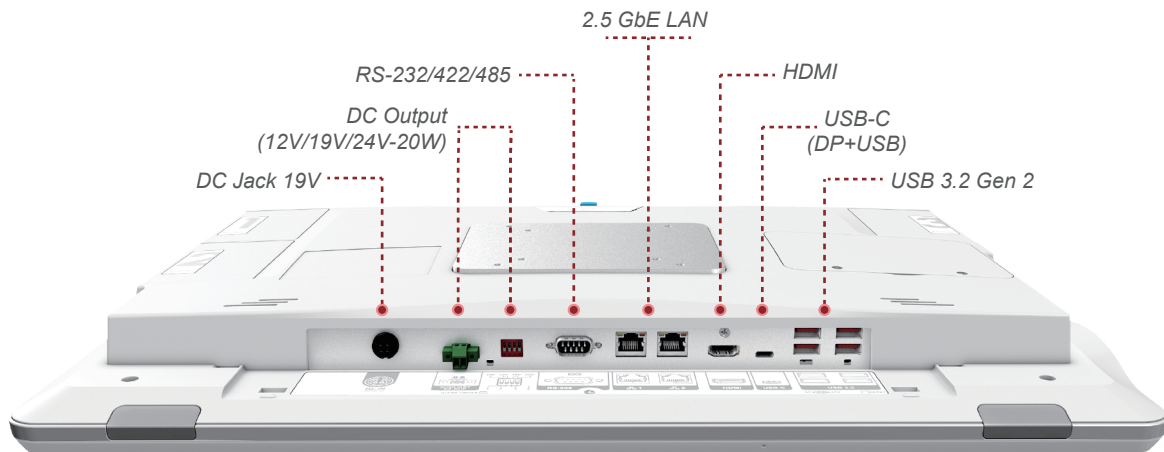


**Ward Round**



**Hybrid OR**

## I/O Interface



## Ordering Information

Part No.	Description
POCm-W22C-RPL-i5/PC-R10	21.5" 350cd/m <sup>2</sup> FHD Medical Panel PC with 13th Gen Intel® Core™ i5-1340PE 4.4GHz on-board processor, 250G SSD, 8GB DDR4 RAM, PCAP touchscreen, 8MP camera, microphone, 802.11a/b/g/n/ac/ax Wi-Fi 6E module, Windows 10 Professional 64-Bit English, w/o battery
POCm-W22C-RPL-i7/PC-R10	21.5" 350cd/m <sup>2</sup> FHD Medical Panel PC with 13th Gen Intel® Core™ i7-1370PE 4.5GHz on-board processor, 250G SSD, 8GB DDR4 RAM, PCAP touchscreen, 8MP camera, microphone, 802.11a/b/g/n/ac/ax Wi-Fi 6E module, Windows 10 Professional 64-Bit English, w/o battery
POCm-W24C-RPL-i5/PC-R10	23.8" 350cd/m <sup>2</sup> FHD Medical Panel PC with 13th Gen Intel® Core™ i5-1340PE 4.4GHz on-board processor, 250G SSD, 8GB DDR4 RAM, PCAP touchscreen, 8MP camera, microphone, 802.11a/b/g/n/ac/ax Wi-Fi 6E module, Windows 10 Professional 64-Bit English, w/o battery
POCm-W24C-RPL-i7/PC-R10	23.8" 350cd/m <sup>2</sup> FHD Medical Panel PC with 13th Gen Intel® Core™ i7-1370PE 4.5GHz on-board processor, 250G SSD, 8GB DDR4 RAM, PCAP touchscreen, 8MP camera, microphone, 802.11a/b/g/n/ac/ax Wi-Fi 6E module, Windows 10 Professional 64-Bit English, w/o battery



### Britemed Technology Inc.

3F., No.306/306-3, Sec. 1, Datong Rd., Xizhi Dist., New Taipei City 22146, Taiwan

TEL: +886-2-86919498

FAX: +886-2-86919468

www.britemed.com.tw

Specifications may change without further notice.  
© 2024 BriteMED Technology Inc. All rights reserved.